

WOOD POLYMER COMPOSITE

DECKING • LOUVERS • CLADDING •
TIMBER TUBE • DIY TILES •



VOL 01

ABOUT US **THIS IS ALWUD**

Alwud is a leading WPC manufacturer in India, who produces composite products that As a leading plastics recycler and producer of green composite, we manufacture in an energy efficient way, virtually waste- free production process. Just as our name shows, we are leading our industry towards better designs, quality, products as well as customer experiences. We believe we can become Your lifelong WPC partner



ALWUD **MISSION**

We work for making our planet more comfortable by being committed to the R&D of new eco-friendly material.



ALWUD **VISION**

We are dedicated to leading in our industry. We facilitate every staff can realize working ability improvement by self efforts on the platform provided by Alwud. We motivate every staff to lead happy life that is affordable to housing, automobile, good education for offspring and a healthy & happy life for parents.



VALUE **EXCELLENCE**

Never stop pursuing more excellence in product quality and performance.

INNOVATION

Always treat technology innovation as our core.

DEDICATION

Always put dedication in every moment of work.

LIABILITY

Stay true to the liability for society and every staff

WHY **ALWUD?**

ENVIRONMENT RESPONSIBLE

Manufactured with over 80% recycled materials and without any toxic substances. Product can be 100% recycled.

GLOBAL SUPPLIERS

Products are not only widely used in India, but also used to worldwide and exported to other countries.

CUSTOMIZED AVAILABLE

Personalized your requirements by enterprise-owned Industry Design Center & Technology Center.

PROFESSIONAL SERVICES

An outstanding sales team offers you professional and considerate services during the stages before and after sales.

EXPERIENCE PRODUCER

Worked as a WPC producer for more than one decade, leading the industry with rich manufacturing experience.

RELIABLE QUALITY

Focus on global market, apply strict international manufacturing standards.





ALWUD THINK GREEN

BORN WITH GREEN

Recycled contents take up to 90% in our product, as a result, we never have to cut down a tree for production. Additionally, we also devote ourselves to landfill reduction since most of material we used are recycled wood and reclaimed plastic film like milk jugs detergent bottles and so on,

Alwud product is made from:

- approximately 60% hardwood fibers
- almost 30% polymer
- the rest 10% contains pigments, UV stability and mildew and fire resistance

Tip: The percentage of each content may vary depending on different types of products. All materials are non-toxic chemicals and preservatives.

GREEN THROUGHOUT PROCESSING

All of our production waste produced during manufacture is reclaimed into new products. As the composite materials are also recyclable, all solid production waste in our facilities is recycled. Besides, we normally practice minimal while effective packaging, so that avoid any unnecessary paper or plastic wrappings, Making green throughout manufacturing mean always considering how we can use every resource more efficiently, and getting closer to our goal of making the best use of every resource.

BEING GREEN IS OUR DNA

Due to the components and processing of Forestar product, it is durable and can be 100% recycled Thanks to the good performance of our_ products, they can be widely used in household and commercial environment. For one thing, Forestar products are sustainable and are built to last and provide durable performance year after year, For the other thing, Forestar product enjoys low maintenance, easy installation, as well as remarkable advantages when compared to wood,

GREEN NEVER STOPS

For every Alwud poeple, think green is not a slogan, but a belief, In past more than 18 years, we have done whatever we can to save energy, reduce emissions, and make the best use of every resource, but we will never stop here. Apart from that, more efforts will be made to strengthen our Enterprise Technology Center by working together with more universities and technical institutes in coming years



ALWUD CERTIFICATIONS



Certificate of Registration

This is to certify that

DHRAVIK EXTRUSION PRIVATE LIMITED
at
ADDRESS: 68-69 GALI NO-4 POCKET-2, GATE NO-4 ROHINI, SECTOR-22 NEW DELHI NORTH WEST DELHI, DELHI-110086

Has been Audited by QCS and found to be in Compliance with the requirements of standard:

ISO 9001:2015
"Quality Management System"

For the following scope:

"WPC PANELS, WPC DECK, WPC LOUVERS, WPC CLADDING, ALUMINIUM COMPOSITE PANEL, ACP LOUVER, WPC TIMBER TUBES, ACP FIN LOUVERS"

Certificate Number: QCS-2024-DEPL-0544

To verify this certificate please visit www.qcsindia.com

Date of Certification: 28th SEP 2024
Date of Reassessment: 27th SEP 2027

1st Surveillance Due: 27th SEP 2025
2nd Surveillance Due: 27th SEP 2026

Validity of this Certificate is subject to Annual Surveillance audits done successfully. This certificate remains the property of QCS and must be returned whenever demanded. QCS is an independent system provider and personnel assessment body (QCS) is accredited by GLOBAL ACCREDITATION CERTIFICATION BOARD (GACB).
US OFFICE: Maryland Avenue, SW Washington, D.C. 20002
info@qcsindia.com, www.qcsindia.com

Certificate of Compliance

DHRAVIK EXTRUSION PRIVATE LIMITED
REGISTERED ADDRESS
ADDRESS: 68-69 POCKET-2, GATE NO-4 ROHINI, SECTOR-22, DELHI-110086, INDIA
FACTORY ADDRESS: E-15, OLD INDUSTRIAL AREA, BAHADURGARH, HARYANA-124507

PRODUCT SCOPE

"WPC PANELS, WPC DECK, WPC LOUVERS, WPC CLADDING, ALUMINIUM COMPOSITE PANEL, ACP LOUVER, WPC TIMBER TUBES, ACP FIN LOUVERS, HIGH PRESSURE LAMINATE"

Has been assessed and registered as meeting the requirements of compliance of sustainability standard

"IGBC - INDIAN GREEN BUILDING COUNCIL"

We hereby confirm that the technical file for above mentioned furniture as produced to us comply with the essential requirements of IGBC in case of alteration of the product, and agreed upon by us, this declaration will lose its validity. The statement is based on a single evolution of one sample of above mentioned product. It does not imply an assessment of the whole production. The compliance certificate issued as per given documents & information by the Organization.

Certificate No. QCS-2024-DEPL-4628

Validity of this certificate can be verified at www.qcsindia.com

Date of Certification: 25th OCT 2024
Date of Reassessment: 24th OCT 2027

1st Surveillance Due: 24th OCT 2025
2nd Surveillance Due: 24th OCT 2026

Validity of this Certificate is subject to Annual Surveillance audits done successfully. This certificate remains the property of QCS and must be returned whenever demanded. QCS is an independent system provider and personnel assessment body (QCS) is accredited by GLOBAL ACCREDITATION CERTIFICATION BOARD (GACB).
US OFFICE: Maryland Avenue, SW Washington, D.C. 20002
info@qcsindia.com, www.qcsindia.com



Certificate of Compliance

DHRAVIK EXTRUSION PRIVATE LIMITED
ADDRESS: 68-69 POCKET-2, GATE NO-4 ROHINI, SECTOR-22, DELHI-110086
FACTORY ADDRESS: E-15, OLD INDUSTRIAL AREA, BAHADURGARH, HARYANA-124507

Has been Assessed and Registered as Meeting the Requirements of Compliance of Sustainability Standard

GRIHA/GREENGUARD CERTIFICATE

We hereby confirm that the sample for above mentioned products as produced to us comply with the essential requirements of GRIHA/GREENGUARD. In case of alteration of the product, and agreed upon by us, this declaration will lose its validity. The statement is based on evaluation of one sample of above mentioned products. It does not imply an assessment of the whole production. The compliance certificate issued as per given documents & information by the Organization.

For the following scope:

"WPC PANELS, WPC DECK, WPC LOUVERS, WPC CLADDING, ALUMINIUM COMPOSITE PANEL, ACP LOUVER, WPC TIMBER TUBES, ACP FIN LOUVERS, HIGH PRESSURE LAMINATE"

Certificate Number: QCS-2024-DEPL-0427

To verify this certificate please visit www.qcsindia.com

Date of Certification: 25th OCT 2024
Date of Reassessment: 24th OCT 2027

1st Surveillance Due: 24th OCT 2025
2nd Surveillance Due: 24th OCT 2026

Validity of this Certificate is subject to Annual Surveillance audits done successfully. This certificate remains the property of QCS and must be returned whenever demanded. QCS is an independent system provider and personnel assessment body (QCS) is accredited by GLOBAL ACCREDITATION CERTIFICATION BOARD (GACB).
US OFFICE: Maryland Avenue, SW Washington, D.C. 20002
info@qcsindia.com, www.qcsindia.com

Certificate of Registration

This is to certify that

DHRAVIK EXTRUSION PRIVATE LIMITED
at
ADDRESS: 68-69 GALI NO-4 POCKET-2, GATE NO-4 ROHINI, SECTOR-22 NEW DELHI NORTH WEST DELHI, DELHI-110086

Has been Audited by QCS and found to be in Compliance with the requirements of standard:

ISO 14001:2015
"Environment Management System"

For the following scope:

"WPC PANELS, WPC DECK, WPC LOUVERS, WPC CLADDING, ALUMINIUM COMPOSITE PANEL, ACP LOUVER, WPC TIMBER TUBES, ACP FIN LOUVERS"

Certificate Number: QCS-2024-DEPL-0543

To verify this certificate please visit www.qcsindia.com

Date of Certification: 28th SEP 2024
Date of Reassessment: 27th SEP 2027

1st Surveillance Due: 27th SEP 2025
2nd Surveillance Due: 27th SEP 2026

Validity of this Certificate is subject to Annual Surveillance audits done successfully. This certificate remains the property of QCS and must be returned whenever demanded. QCS is an independent system provider and personnel assessment body (QCS) is accredited by GLOBAL ACCREDITATION CERTIFICATION BOARD (GACB).
US OFFICE: Maryland Avenue, SW Washington, D.C. 20002
info@qcsindia.com, www.qcsindia.com





ALWUD WPC EXTERIOR LOUVERS

Exterior Louver has creative shapes and clear lines, enhances the layering and 3D effect of the room. The abundant models enables us to achieve great flexibility in our interior decoration.

It designed to create an ideal indoor living space for you with the artistic color, super original wood feeling, and various unique shape. It is the perfect combination of art and life.



ALWUD EXTERIOR LOUVER

EXTERIOR LOUVER

This series is highlighted by its unique design in both engineer structure and installation method. The former one helps the castellation present various space structure, and the latter one makes the siding very strong in structure and can be used as the ceiling structure.



UNIQUE ENGINEERED DESIGN

Compared to the classic cladding design, the castellation cladding exhibits excellent appearance in third-dimensional sense. Therefore, it gives more options for your exterior home walls, that is to say, you can choose the vertical type if you want a taller vision, then a horizontal type can give you a broader appearance, and your personalized pursuit can be satisfied by a mixed type.

OUTSTANDING CO-EXTRUDED SHIELD

The capped wood plastic shield, on the one hand, gives the cladding distinct colors and textures, and on the other hand, makes the cladding possesses better performance in terms of UV & stain resistance as well as mold & pest resistance. the ceiling decoration.

FINISHES :



WOODEN



STRIPE



COLOUR :

ALW 401, ALW 501



AFRICAN WALNUT



BLACK

ALW 402, ALW 502

ALW 403, ALW 503



NATURAL WOOD



IPE WOOD

ALW 404, ALW 504

ALW 405, ALW 505



BURMA TEAK



GREY

ALW 406, ALW 506

ALW 407, ALW 507



SILVER OAK

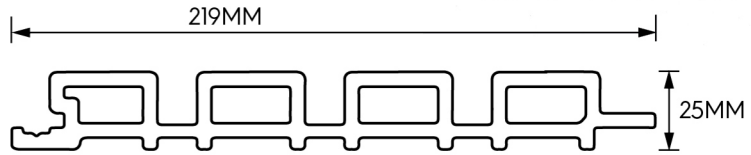


ROSE WOOD

ALW 408, ALW 508

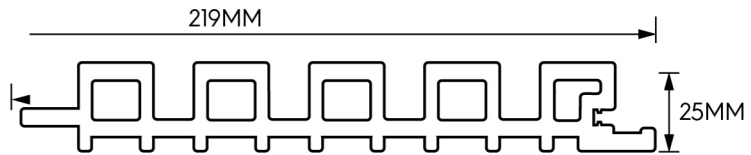
SPECIFICATION :

4 Flute Louver (ALW 401-408) Series



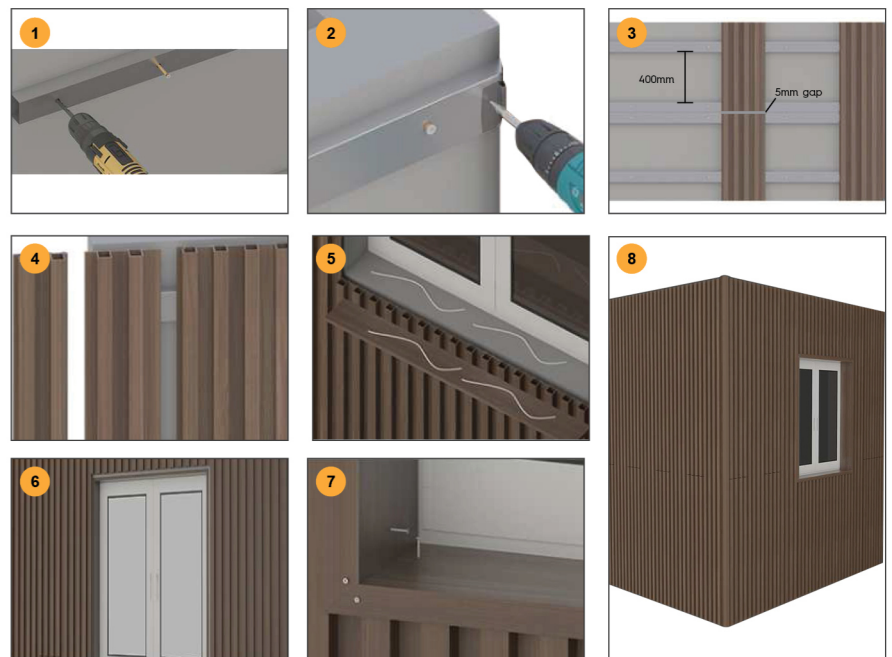
L : 2900MM X W : 219MM X H : 25MM

5 Flute Louver (ALW 501-508) Series



L : 2900MM X W : 219MM X H : 25MM

INSTALLATION :



*Customised length is also available.

**Actual colours may vary from the pictures shown in the brochure.



DHRAVIK EXTRUSION PVT. LTD.

Works : E19, Old Industrial Area,
Bahadurgarh, Jhajjar, Haryana 124507

Email : info@alwud.in

Web : www.alwud.in

Care No : +91 8221020082

